

Power Transmission Products & Solutions for Power Plants



Choose Rexnord for Proven Product and Service Solutions.

From specification to installation, to field monitoring and service, Rexnord helps maximize your uptime, productivity and profit.



Industry expertise.

Work with a true partner who understands your applications, specifies the right equipment and adds value at every step. From bulk material and fluid handling to cooling towers to flue gas desulfurization – power plant operators, equipment manufacturers and consulting engineers turn to Rexnord for their power transmission solutions.

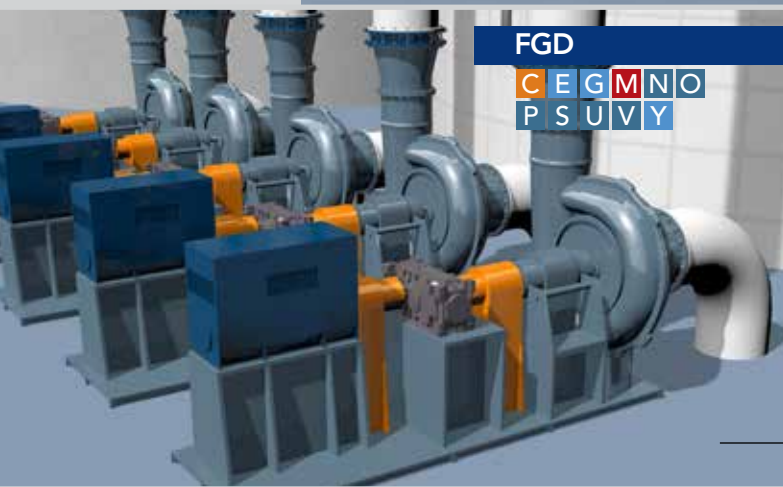
Rexnord is with you every step of the way.

From specification and installation to testing, monitoring, repair and overhauls, Rexnord provides outstanding lead times and customer service. Count on our superior product quality, on-the-spot field service, and industry-leading technical support to prevent costly maintenance, repairs and shutdowns, maximizing your return over the product's total lifecycle. With sales and service operations worldwide, and a vast network of distributor relationships, we deliver exactly what you need, when you need it.

Rexnord products, Rexnord reliability.

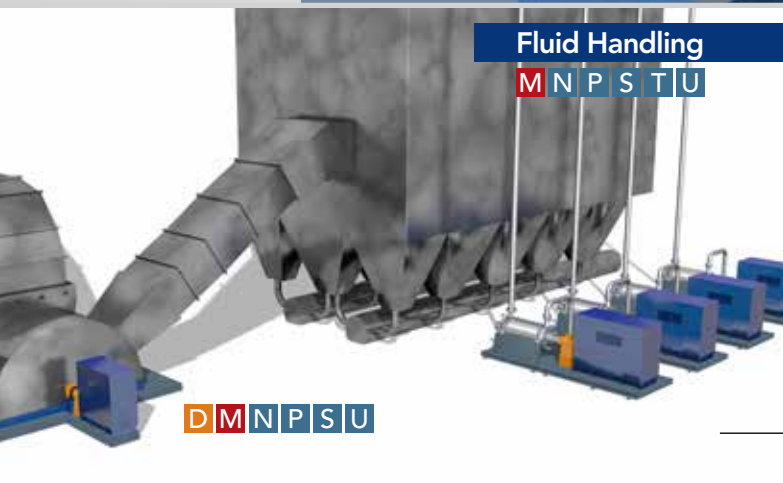
Rexnord is a leading manufacturer of critical system components that perform under the most rigorous demands in your power applications, including gear drives, bearings, couplings and chain. With safety in mind, our products are engineered to meet cost and performance criteria to ensure the most efficient solution for specific applications.





FGD

C E G M N O
P S U V Y



Fluid Handling

M N P S T U

D M N P S U



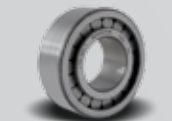
Bearings



A Rexnord® SAF-Style Bearings



B Rexnord SHURLOK® Adapter Mount Spherical Roller Bearings



C Rexnord Cylindrical and Spherical Roller Bearings



D Rexnord 300 Series Heavy Duty Mounted Ball Bearings

Gear Drives



E Falk V-Class™ Gear Drives



F Falk® Quadrive® Shaft-Mounted Gear Drives



G Falk A-Plus® Gear Drives



H Rexnord Planetgear™ Speed Reducers

PT Drive Components



I Stearns® Motor Mounted Brakes



J Autogard® Torque Limiters



K Falk True Hold® Low-Speed Backstops



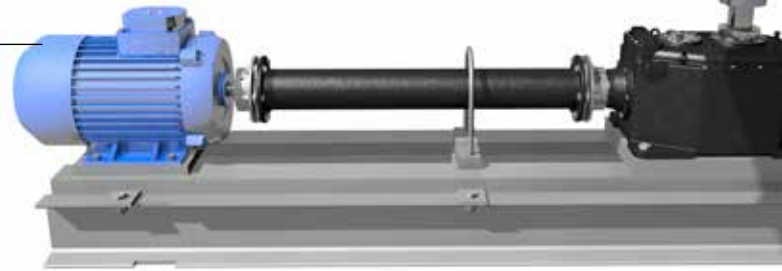
L Stearns Mechanical Lockout Brakes



M Tollok™ Keyless Locking Assemblies

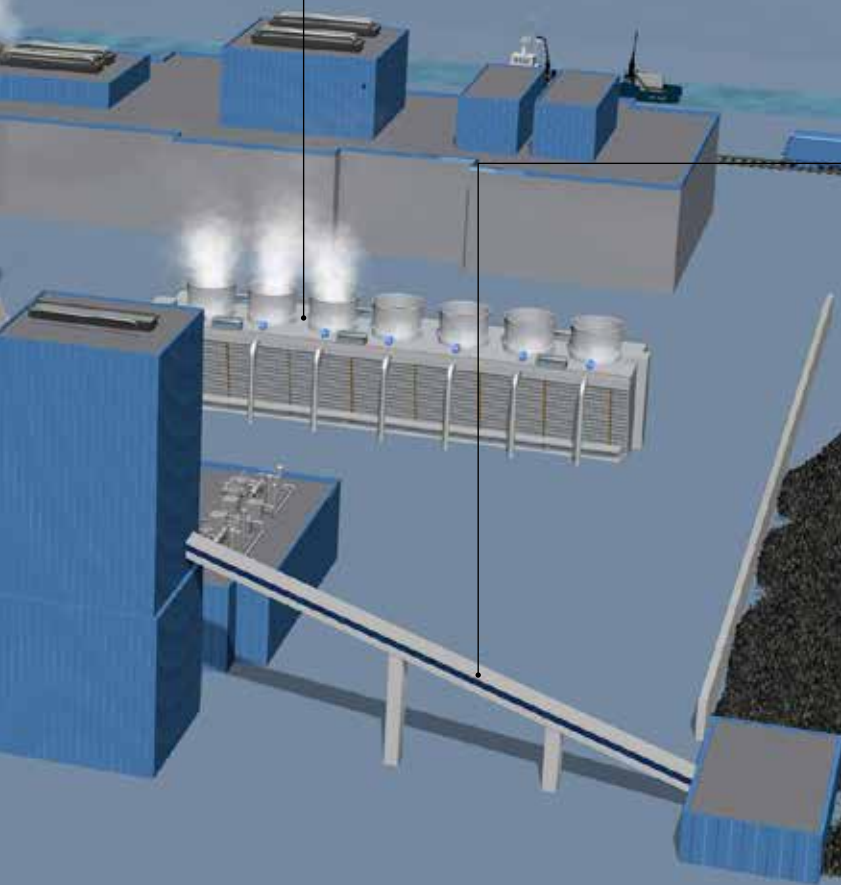
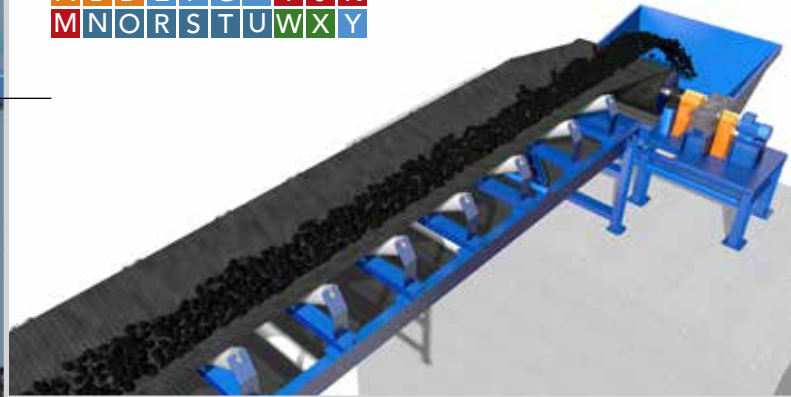
Induced Draft Cooling

L M Q Y



Bulk Material Handling

A B D E F G H I J K
M N O R S T U W X Y



Couplings



N Falk Steelflex® Grid Couplings



Q Rexnord Addax® Composite Couplings



T Falk Wrapflex® Elastomeric Couplings



O Falk Lifelign® Gear Couplings



R Falk True Torque® Fluid Couplings



U Falk Orange Peel® Rotating Shaft Guards



P Rexnord Thomas® Disc Couplings



S Rexnord Omega® & Viva® Elastomeric Couplings



V Rexnord Euroflex™ Couplings

Industrial Chain & Conveying Equipment



W Link-Belt® & Rex® Engineered Steel Chain



X Rex Conveyor Idlers

Services



Y Rexnord Industrial Services™ and Falk Renew®

Fluid Handling

All thermal power plants require vast amounts of fluid handling equipment for a variety of liquids, gases and slurries. Dozens of pumps, fans, and compressors can be found in a power plant, and all are required for continuous and safe power generation.

Extensive Line of Pump, Fan, Blower, and Compressor Components

Rexnord offers a broad selection of couplings for rotating equipment: from the engineered disc couplings required for turbine-driven equipment, to the easy-to-maintain elastomeric couplings used on general process pumps. Rexnord manufactures couplings for use in challenging applications such as high-speed pumps, fans experiencing high vibration, and machinery controlled by variable frequency drives (VFD).

Rexnord's 300 Series Heavy Duty Mounted Ball Bearings are designed for fan and blower applications. Our patented SHURLOK mounting collar design improves efficiency and uptime by reducing installation errors and maintenance costs.



*Rexnord Euroflex
Couplings*



*Rexnord 300 Series Heavy
Duty Mounted Ball Bearings*



*Rexnord Thomas
Disc Couplings*

Induced Draft Cooling

Cooling towers are one of the harshest environments for power transmission equipment. Moisture, chemicals, and minerals continually attack the equipment driving the cooling tower fans making durability and corrosion resistance a priority for these components.

Superior Composite Couplings

Rexnord Addax Composite Couplings are ideal for cooling tower applications. The composite material offers superior corrosion resistance and minimal thermal expansion relative to steel shafts. Additionally, these couplings feature a lighter weight for ease of installation. A mechanical brake is also available to eliminate potentially hazardous shaft rotation during maintenance.



*Rexnord Addax
Composite Couplings*



Bulk Material Handling

Some power plants require extensive bulk material handling equipment. Railcar unloaders, stacker-reclaimers, conveyors and pulverizers are used to move and size the coal as it travels from the terminal to storage, and to the boiler. Similar equipment is also used to transport limestone and other aggregates necessary for plant processes. Finally, a variety of equipment is used to handle and dispose of ash from the boiler.

Broad Power Transmission Portfolio

Although bulk material handling varies significantly from plant to plant, Rexnord's product offering spans the wide breadth of equipment and power requirements used in these applications. Rexnord offers everything from small shaft mounted and large engineered gearboxes, as well as the complementary couplings and bearings. Idlers and engineered chain are also available for stackers and reclaimers.



*Rexnord
SAF-Style Bearings*



*Rexnord Planetgear
Speed Reducers*

Flue Gas Desulfurization

Flue gas desulfurization (FGD) units are becoming a more common means to reducing plant emissions. Common desulfurization processes are powered by large slurry pumps used to recirculate large volumes of slurry through the exhaust gas and treatment processes.

Slurry Pump Power Transmission

Rexnord is a leader in the engineered gearboxes and couplings used to drive large slurry pumps. Engineered gearboxes designed for durability, and couplings designed to absorb vibration and axial movements, provide a more robust solution than belt and sheave alternatives.



Falk V-Class Gear Drives



Falk Lifelign Gear Couplings



Falk Steelflex Grid Couplings

Contact Rexnord today to learn about our power plant solutions that can help you increase uptime, productivity and profit.
866-REXNORD (Within the U.S.) or 414-643-2366 (Outside the U.S.)
www.rexnord.com



866-REXNORD/866-739-6673 (Within the U.S.)
414-643-2366 (Outside the U.S.)
www.rexnord.com

Why Choose Rexnord?

When it comes to providing highly engineered products that improve productivity and efficiency for industrial applications worldwide, Rexnord is the most reliable in the industry. Commitment to customer satisfaction and superior value extend across every business function.

Delivering Lowest Total Cost of Ownership

The highest quality products are designed to help prevent equipment downtime and increase productivity and dependable operation.

Valuable Expertise

An extensive product offering is accompanied by global sales specialists, customer service and maintenance support teams, available anytime.

Solutions to Enhance Ease of Doing Business

Commitment to operational excellence ensures the right products at the right place at the right time.

REXNORD

Rexnord Company Overview

Rexnord is a growth-oriented, multi-platform industrial company with leading market shares and highly trusted brands that serve a diverse array of global end markets.

Process & Motion Control

The Rexnord Process & Motion Control platform designs, manufactures, markets and services specified, highly engineered mechanical components used within complex systems where our customers' reliability requirements and the cost of failure or downtime are extremely high.

Water Management

The Rexnord Water Management platform designs, procures, manufactures and markets products that provide and enhance water quality, safety, flow control and conservation.